

Volvo Powertrain – driving the Volvo Group



Andor Paizer

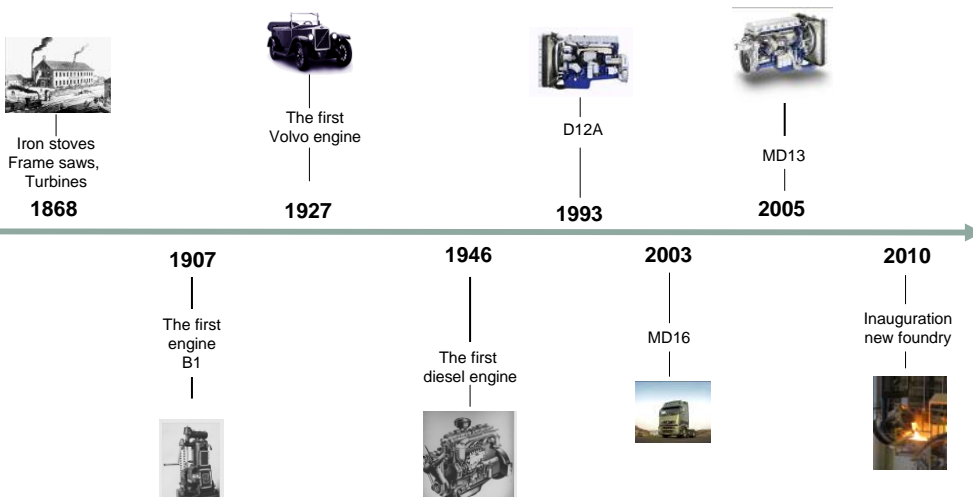
Volvo Powertrain Skövde

Volvo Powertrain Skövde
Capital Market Day - June 2010
1



VOLVO

Over 100 years of engine production




Volvo Powertrain Skövde
Capital Market Day - June 2010
2



VOLVO

Volvo Powertrain – Skövde



 2 200 employees

Casting



- Cylinder block
- Cylinder head
- Brake disc
- Flywheel

Machining



- Cylinder block
- Cylinder head
- Crankshaft
- Camshaft
- Other components

Assembly



- 12,13 & 16 litre diesel engines

Volvo Powertrain Skövde
Capital Market Day - June 2010
3



VOLVO

Our customers – always in focus

Deliveries 2009/2008

Casting	49 820/107 716 ton
Machining	72 830/178 188 cylinder heads
Assembly	31 324/98 177 engines

Components to Volvo Powertrain

Köping
Lyon
Curitiba
Hagerstown

Skövde

Volvo Trucks



Renault Trucks



Buses



Volvo Penta



Construction Equipment



Mack Trucks



UD Trucks



Volvo Powertrain Skövde
Capital Market Day - June 2010
4



VOLVO

New foundry in place

- Capacity 80 000 cylinder heads/year in 3 shifts
- Melting shop – with lab-function
- Future Process Casting line
- Core shop – complete with vision tool system
- Fettling shop
- Energy efficient and reduced environmental impact



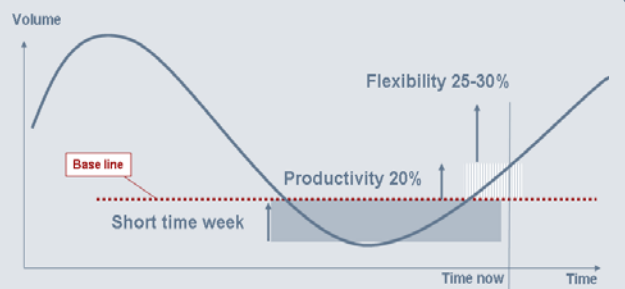
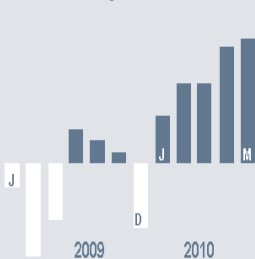
Volvo Powertrain Skövde
Capital Market Day - June 2010
5



VOLVO

Operational leverage & flexibility is key

Productivity 2009-2010

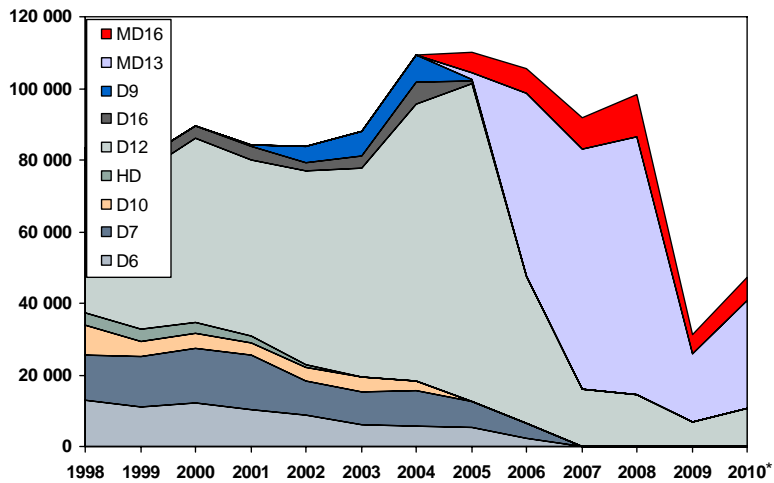


Volvo Powertrain Skövde
Capital Market Day - June 2010
6



VOLVO

Transformation 1998-2010



* Q1 2010 annualized

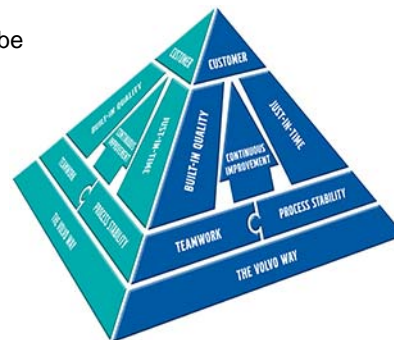
Volvo Powertrain Skövde
Capital Market Day - June 2010
7



VOLVO

Volvo Production System – VPS

- VPS integrates the entire value chain - all must be connected in the value chain with a holistic approach.
 - Product Development Process (PDP)
 - Sales to Order (StO)
 - Order to Delivery (OtD)
 - Delivery to Repurchase (DtR)



VPS requires all areas and individuals to commit to contribute to the transformation of the Volvo Group in the 21st century.

Volvo Powertrain Skövde
Capital Market Day - June 2010
8



VOLVO

Program for today – Welcome!

- Transport by bus
- 6 groups
- 10.15 Plant tour:
 - Casting
 - Machining
 - Assembly
- 12.00 Lunch
- 13.00 Presentations
- 17.00 End of visit



Volvo Powertrain Skövde
Capital Market Day - June 2010
9



VOLVO

Our safety rules



Volvo Powertrain Skövde
Capital Market Day - June 2010
10



VOLVO